

# NH CHIS Annual Meeting



**Thursday, August 23, 2012**

1:00pm – 2:30pm EDT

In-person (NH DHHS Brown Building Room 468) and WebEx



# Agenda

- Introductions
  - NH CHIS Team
  - Milliman Team
- Transition Process
  - Plan/Process
  - New Website
  - Registration
- Review the Process for Submitting Data
  - Registrations
  - Preprocessing Tool Demo
  - Resuming Submissions
  - Short Term verification of Submissions
- Issues
  - Rule inconsistencies
  - Data – submission, completeness, quality
- Future Communications

# Transition-Plan/Process

- Data transmissions via Onpoint stopped 6/15/2012
- Establishment of NHCHISsupport@milliman.com
- Weekly meetings with Onpoint until mid July
  - Preprocessing tool documentation
  - History files/Pertinent tables
  - Contact information
  - Registration and documentation (i.e. web)
- Drafting and updating documentation
- Building new Preprocessing tool
- Creating new registration site
- Creating edits/thresholds and reporting

# Transition- New Website

- Website (initial similar to Onpoint)
- Domain Name: <https://nhchis.com>
- Contents:
  - Registration
  - Data submission
  - Miscellaneous info
    - Data submission manual
    - Rules

# Transition- Registration

- Registration

- Healthcare claims processors will need to reregister to ensure we have most current information.
- Collecting some new information including:
  - Carve outs (i.e. pharmacy, mental health)
  - Claim adjustments
  - Missing information (i.e. data submission rules)

# Transition-Web Demo



[NH CHIS Home](#)

[Data Submission](#)

[Data And Reports](#)

[Standard Reports](#)

[Special Studies](#)

[Presentations](#)

[Data Set](#)

[Data Set](#)

[Documentation](#)

[Public Use Data](#)

[Requests](#)

[Limited Use Data](#)

[Requests](#)

[Standard Reports](#)

[Rule and Law](#)

[Registration](#)

[Data Release](#)

[Data Status](#)

[DHHS home](#)

[NHID home](#)

[User Resources](#)

[Join an E-mail List](#)

[Related Resources](#)

[Contact](#)

## Welcome !

The New Hampshire Comprehensive Health Care Information System (CHIS) was created by NH state statute to make health care data available as a resource for insurers, employers, providers, purchasers of health care, and state agencies to continuously review health care utilization, expenditures, and performance in New Hampshire and to enhance the ability of New Hampshire consumers and employers to make informed and cost-effective health care choices. The statute also required that the New Hampshire Insurance Department (NHID) and the NH Department of Health and Human Services (NH DHHS) partner on the project. The same legislation that created the CHIS also enacted statutes that mandated that health insurance carriers submit their encrypted health care claims data and Health Employer Data and Information Set (HEDIS) data to the state.

NH DHHS, Office of Medicaid Business and Policy, after a competitive bid process, contracted with Milliman in June 2012 to assume maintenance of the CHIS. Under the contract, Milliman is acting as DHHS's agent for the collection of claims and HEDIS data, is providing a series of reports and studies for DHHS that examine the NH Medicaid program in concert with using the commercial data for benchmarking, and is hosting this website.

# Transition-Web Demo



- [NH CHIS Home](#)
- [Data Submission](#)
- [Data And Reports](#)
  - [Standard Reports](#)
  - [Special Studies](#)
  - [Presentations](#)
  - [Data Set](#)
  - [Data Set](#)
  - [Documentation](#)
  - [Public Use Data Requests](#)
  - [Limited Use Data Requests](#)
  - [Standard Reports](#)
- [Rule and Law](#)
- [Registration](#)
- [Data Release](#)
- [Data Status](#)
- [DHHS home](#)
- [NHID home](#)
- [User Resources](#)
- [Join an E-mail List](#)
- [Related Resources](#)
- [Contact](#)

CompanyName

MailingAddress

City State Zip

NAIC FEIN

**1.** Does your company currently conduct health insurance related business for residents of the state of New Hampshire or have active certificate holders in the State of New Hampshire?

- Yes
- No (Skip to #12)

**1.a)** Are you a PAYER that writes more than \$250,000 in accident and health insurance premiums in New Hampshire?

- Yes (Skip to #2)
- No (Answer #1b)

**1.b)** Are you an ADMINISTRATOR that covers more than 200 New Hampshire lives in total?

- Yes (Continue)
- No (Skip to #12)

**2.** Please complete the information below in relationship to the eligibility data your company will submit.

Estimated #Covered Lives for 1 month:

Estimated # Medicare Supplemental Covered Lives in 1 Month:

**3.** Will your company submit medical claims data?

- Yes
- No (Skip to #6)

**4.** Explain how your company processes medical claim adjustments and how those adjustments are reflected in the submitted data.

# Data Submission – Preprocessing Tool

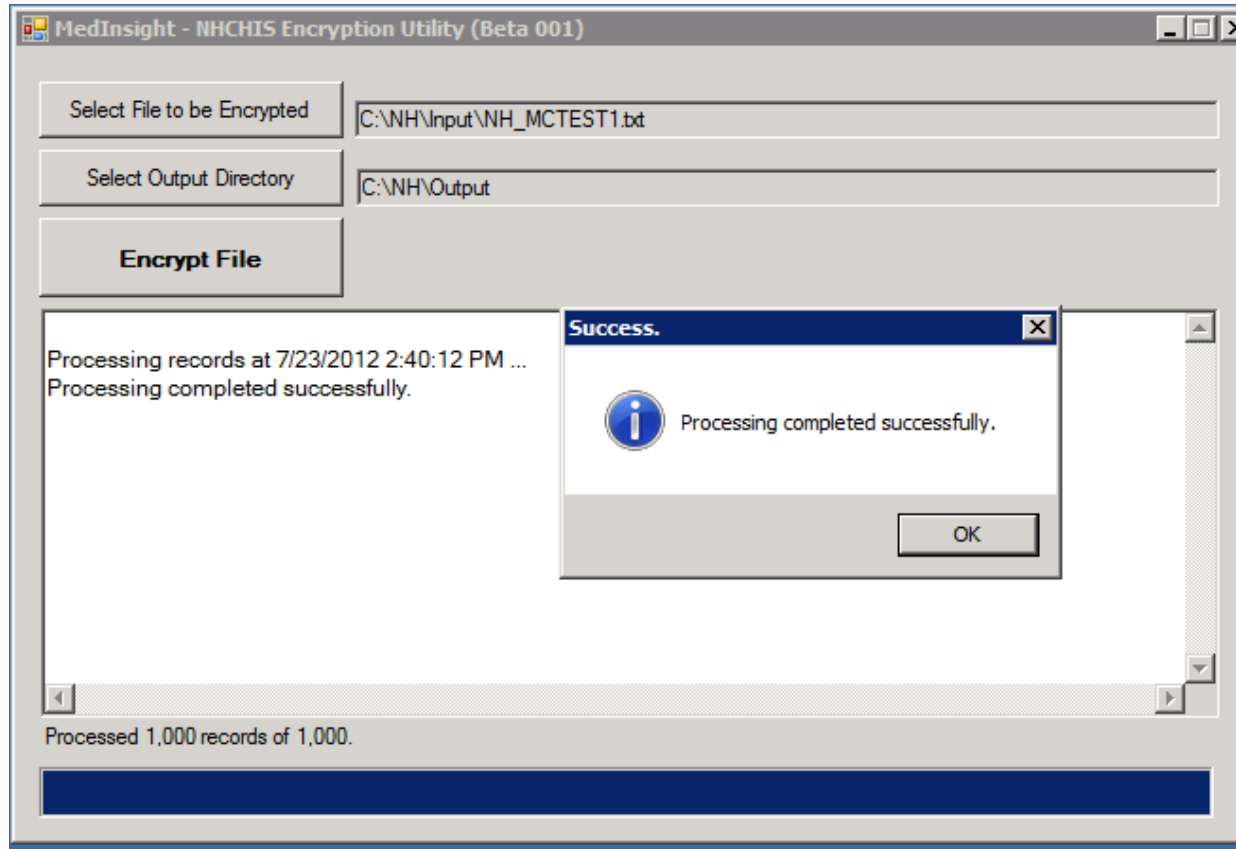
- Due to NH Rule, data must be preprocessed prior to submission, this requires the manual step of running the data through a Preprocessing tool.
- The new tool will be available to download from the <https://nhchis.com> website.



# Data Submission - Review Process for Submitting Data

- Minimal changes to overall data submission process
- Providing SFTP's week of August 20<sup>th</sup>
- Testing with a few Healthcare processors
- Preprocessing tool to be sent by end of August
- Any files not accepted by Onpoint will need to be submitted to Milliman between September 3<sup>rd</sup> and 14<sup>th</sup>, using the Milliman Preprocessing tool.
- Healthcare processors with recent large enrollment changes need to notify Milliman of these changes.
- Milliman will verify data is similar to previous submissions.
- Until you receive notification from Milliman that these files are no longer needed, keep your data extracts.
- Milliman will provide edit/threshold results. Initial process may be slower than prior submissions.

# Data Submission – Preprocessing Tool

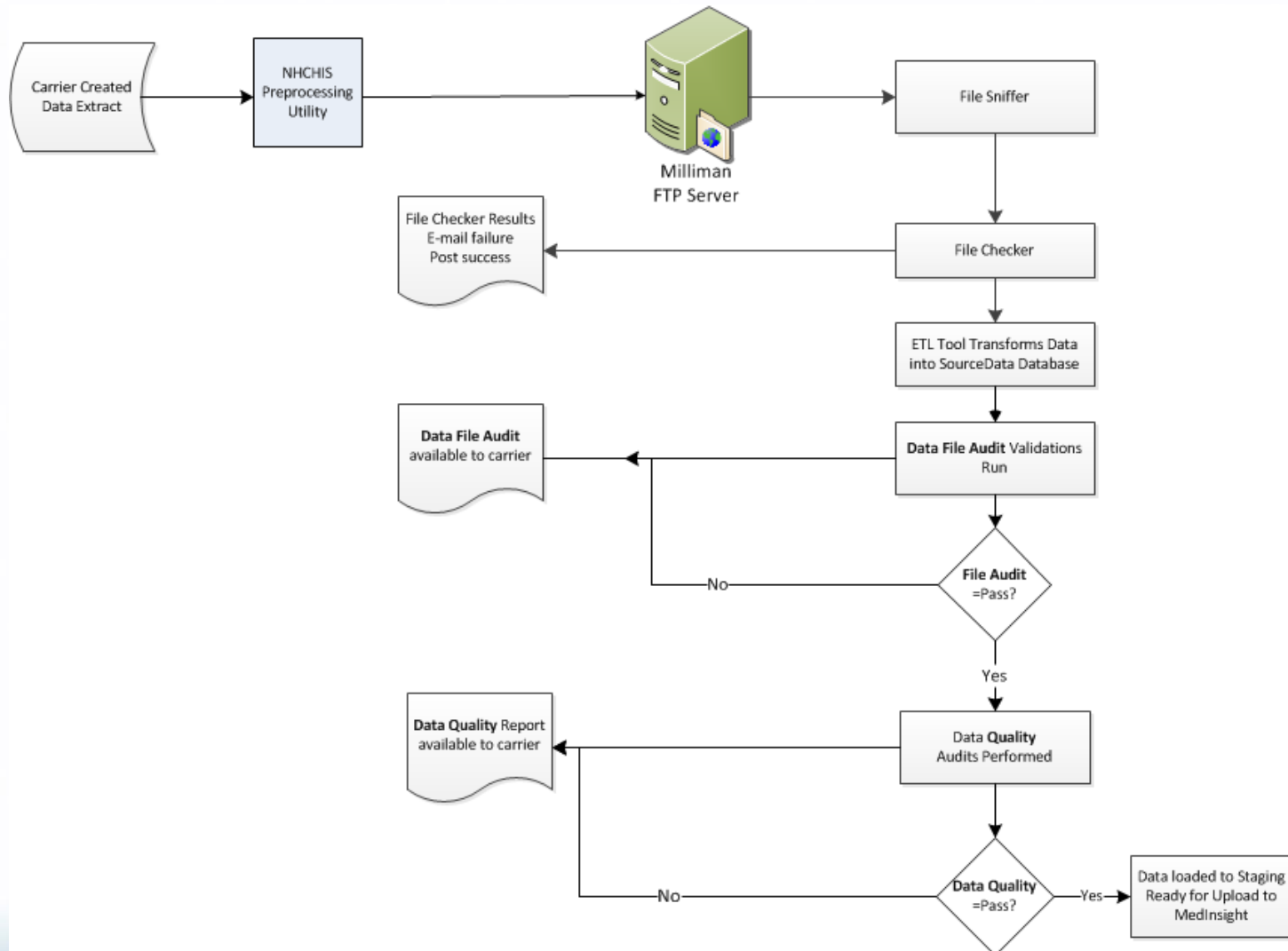


# Data Submission –Edits/Thresholds

- Data Submission Process

- Run file extracts through the Milliman Preprocessing tool
- Files will have slightly different name than those previously submitted (Milliman includes an additional data period begin date)
- Send files to the Milliman secure FTP site (<https://txfr.medinsight.milliman.com>). If you do not receive an ID and password this month, contact [NHCHISsupport@milliman.com](mailto:NHCHISsupport@milliman.com)

# Data Submission –Edits/Thresholds



# Data Submission –Edits

## NH CHIS DATA SUBMISSION - DATA FILE REPORT

**File ID:** 1000 **File Name:** NHT0001\_DC201206201202\_20120601

**File Type:** Dental Claims

**Company:** Sample Payer Company

Received: 7/25/2012 9:50:55 PM

Months: 201206 through 201206

Records: 2036

Stage: **Data Validation** Status: **Pass**



Data Element	Validation Type	Invalid Records	Invalid Percent	Valid Records	Valid Percent	Threshold	Payer Threshold	Result
<b>DC001 - PAYER</b>								
	FIELD LENGTH	0	0.0 %	2036	100.0 %	100.0%		PASS
	DATA FORMAT	0	0.0 %	2036	100.0 %	100.0%		PASS
	BLANK/NULL	0	0.0 %	2036	100.0 %	100.0%		PASS
	INVALID VALUE	0	0.0 %	2036	100.0 %	100.0%		PASS
<b>DC002 - NATIONAL PLAN ID</b>								
	FIELD LENGTH	0	0.0 %	2036	100.0 %	0.0% - 100.0%		PASS
	DATA FORMAT	0	0.0 %	2036	100.0 %	0.0% - 100.0%		PASS
	BLANK/NULL	0	0.0 %	2036	100.0 %	0.0% - 100.0%		PASS
<b>DC003 - INSURANCE TYPE/PRODUCT CODE</b>								
	FIELD LENGTH	0	0.0 %	2036	100.0 %	100.0%		PASS
	DATA FORMAT	0	0.0 %	2036	100.0 %	100.0%		PASS

# Data Submission –Thresholds

## NH CHIS - DATA QUALITY SUMMARY REPORT

**Company:** Sample Payer Company

**File ID:** 1000

**File Name:** NHT0001\_DC201206201202\_20120601

**Start Month:** 201206

**Records:** 2036

**File Type:** Dental Claims

**Received:** 7/25/2012 9:50:55 PM

**End Month:** 201206

**Stage:** Data Quality **Status:** Pass



Data Quality Audit ID	Data Quality Audit Description	Calculated Value	Threshold	Payer Threshold	Result
NHDQD017	Average # claims per member	2.05	0 - 5		PASS
NHDQD020	% Records w/from service date 2 or more years old	0.00	0 - 0.02		PASS
NHDQD021	Ratio of MEMSSN to ESSN	1.80	1 - 3		PASS
NHDQD023	% Records w/gender = male	0.58	0.2 - 0.8		PASS
NHDQD024	% Records w/unknown gender	0.00	0 - 0.004		PASS
NHDQD026	Average age of dependent child	8.00	6 - 18		PASS
NHDQD037	% Records w/group number blank	0.12	0 - 0.001		PASS
NHDQD039	% Records w/date of birth < 1910 or date of birth > date of service or date of birth > membership period	0.00	0 - 0.03		PASS
NHDQD043	% Records w/unknown provider #	0.00	0 - 0.001		PASS
NHDQD046	Ratio of service provider number to service provider name	1.20	0.3 - 3		PASS
NHDQD047	Ratio of distinct service provider taxid to service provider name	2.10	0.3 - 3		PASS

# NH CHIS/Healthcare Claims Processor Stakeholder Group

- Milliman will establish a NH CHIS/Healthcare claims processor group to allow a means for communicating about items such as:
  - Inconsistencies with rule requirements vs. historical data submissions
  - Load and quality edits
  - Data completeness, consistency, and quality issues
  - Milliman system submission issues
  - Healthcare claims processors issues

# Questions/Concerns

- Questions and concerns from CHIS/Healthcare claims processors
  - With data submittal requirements?
  - With Milliman systems requirements?
  - Other?



# Future Communications

- Establish stakeholder group of Healthcare claims processors to provide feedback
- Newsletter
- [NHCHISsupport@milliman.com](mailto:NHCHISsupport@milliman.com)
- [www.NHCHIS.com](http://www.NHCHIS.com)